

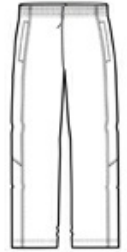


Block gusts and chill with our coordinating, water-repellent wind pants and jackets. Lightweight and breathable, this outerwear essential features contrasting piping details for true athletic style.

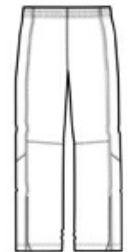
- 100% polyester
- Mesh lining
- Elastic waistband with drawcord
- Two front pockets
- Extended leg zippers
- Mesh lining above knees, poly lining below for easy on/off

CARE INSTRUCTIONS

Machine wash cold on gentle cycle with like colors. Use mild detergent. Remove immediately. Do not allow to lay on itself when wet. Do not bleach. Tumble dry low. Cool iron if needed. Do not dry clean.



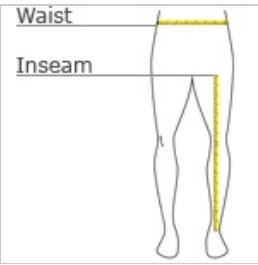
front



back

[Tips For Effectively Screen Printing Polyester Fabrics](#)

HOW TO MEASURE



WAIST

Measure waist at the height pants are normally worn, and keep tape comfortably loose.

INSEAM

Measure a similar style pant that fits well and is the desired length. Measure from the crotch seam to the hem.

SIZE CHART

	XS	S	M	L	XL	2XL	3XL	4XL
Waist	26-28	29-31	32-34	35-37	38-40	41-43	44-47	48-51
Inseam	30	31	32	32	33	33 1/2	34	34 1/2

COLOR INFORMATION



Black/ White Graphite Grey/
 PMS NTR BLACK CWhite
 PMS 7540 C